

**R-5050 Series
Automatic Drainage Gate**

Automatic drainage gates are used in areas with a requirement to prevent back flow, such as storm and sanitary sewer systems.

STANDARD GATES: Furnished with vertical closure for maximum ease of operation.

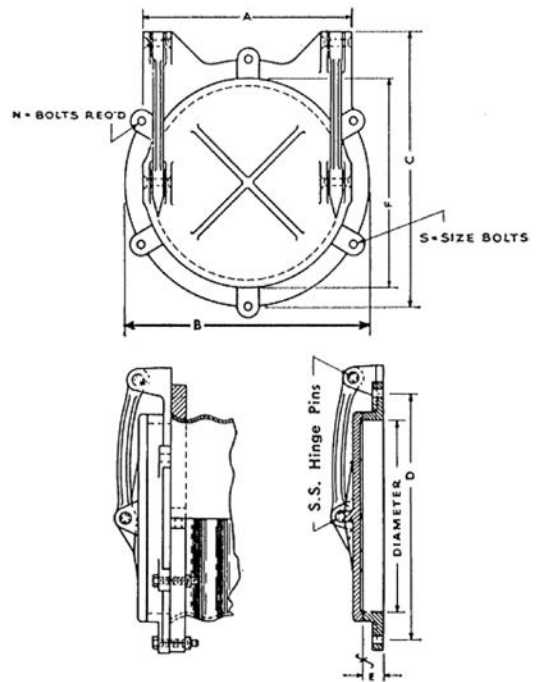
GENERAL INFORMATION: Gates are made of cast iron. All moving parts operate on stainless steel hinge pins. The cover is hung with cast iron arms (Ductile Iron arms on larger sizes) located at the outer edges near the center of gravity to ensure sensitive operation. For improved seating, order with neoprene seat at extra cost.

Aluminum covers can be furnished for special requirements, if specified. Also available on special order and at extra cost are neoprene or solid bronze seat mounts and bronze bushed hinges.

For applications with extreme head pressure contact Neenah's Product Engineering Department.

Maximum head loss occurs when pipe is flowing full. Consider the head loss to be one-half the pipe diameter.

These flap gates are self-draining when no up-stream flow exists and no head is on the downstream side.



Dimensions in inches

Catalog No. Type SF	Catalog No. Type CF	Catalog No. Type FF	Diameter	A	B	C	D	E	F	N	S
R-5050-SF6	R-5050-CF6	R-5050-FF6	6	7	11	13	11	3/4	7	four	5/8
R-5050-SF8	R-5050-CF8	R-5050-FF8	8	9 1/4	11	13	11	1 1/8	9 1/4	four	5/8
R-5050-SF10	R-5050-CF10	R-5050-FF10	10	11 1/4	13 1/2	15 1/5	13 1/2	1 1/8	11 1/4	four	5/8
R-5050-SF12	R-5050-CF12	R-5050-FF12	12	13 1/4	15 7/8	18	15 3/4	1 1/8	13 1/4	four	5/8
R-5050-SF15	R-5050-CF15		15	16 1/4	19	21	18 3/4	1 1/8	16 1/4	four	5/8
R-5050-SF18	R-5050-CF18	R-5050-FF18	18	19 1/4	22 1/8	24 1/4	22 1/8	1 1/4	19 1/4	four	3/4
R-5050-SF20	R-5050-CF20	R-5050-FF20	20	22 1/4	25 1/8	27 1/4	25 1/8	1 1/4	22 1/4	four	3/4
R-5050-SF21	R-5050-CF21		21	22 1/4	25 1/8	27 1/4	25 1/8	1 1/4	22 1/4	four	3/4
R-5050-SF24	R-5050-CF24	R-5050-FF24	24	25 1/4	28 1/4	30 1/4	28 1/4	1 1/4	25 1/4	six	3/4
R-5050-SF27			27	28 1/4	31 1/4	33 1/4	31 1/4	1 1/4	28 1/4	six	7/8
R-5050-SF30	R-5050-CF30		30	31 1/4	34 1/4	36 1/2	34 1/4	1 1/4	31 1/4	six	7/8
R-5050-SF36	R-5050-CF36		36	37 1/2	41 1/2	43 1/2	41 1/2	1 3/8	37 1/2	six	7/8
R-5050-SF42	R-5050-CF42		42	43 1/2	47 1/2	49 1/2	47 1/2	1 3/8	43 1/2	six	7/8
R-5050-SF48	R-5050-CF48		48	49 1/2	54	56 1/2	54	1 1/2	49 1/2	six	1



Type SF attached to concrete wall.



Type CF attached to corrugated metal pipe. (not for use with helical CMP)



Type FF attached to flanged iron pipe.